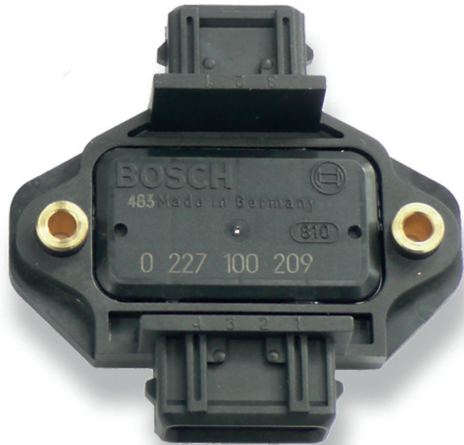


# Ignition Module IM 3.1

www.bosch-motorsport.com



- ▶ Max. 3 cylinders
- ▶ 47 g
- ▶ Fits to all MS 4 ECUs
- ▶ Especially adapted for Coil P and 3x2

This ignition module IM is an external ignition power stage capable of supplying up to three non-transistorized ignition coils.

The IM input signal should be supplied by an ECU with ignition signal outputs in the range of 10 to 20 mA (e.g. MS 4 Sport/MS 4.4 Sport).

The IM unit combines the robustness of a high quality production part with good electrical performance to provide an ideal solution for adapting non-transistorized coils to an ECU without internal ignition driver stages.

## Application

Primary current	≤ 8.5 A
Clamp voltage	380 V ± 30 V
Operating temperature range at measuring point	-40 to 120°C
Storage temperature range	-40 at 130°C
Max. vibration	400 m/s <sup>2</sup> at 5 to 2,500 Hz

## Technical Specifications

### Mechanical Data

Size	70.5 x 68 x 20 mm
Weight w/o wire	47 g
Mounting	2 x M4 screws with spring washer
Operating temperature	-40 to 110°C
Permissible fuel temperatures	≤ 70°C

### Electrical Data

U <sub>Batt</sub> typical	13.5 V
Voltage supply	6 to 16.5 V
I <sub>B</sub> high active on	min. 10 mA
I <sub>B</sub> low off	0 mA
I <sub>B</sub>	10 to 22 mA
I <sub>C</sub> typical	≤ 8.5 A
I <sub>C</sub> max. at T <sub>U</sub> < 120°C	< 10 A
U <sub>CE</sub> satt at I <sub>C</sub> = 5 A	< 3 V
U <sub>CE</sub> satt at I <sub>C</sub> max	< 9 V

### Characteristic

Characteristic dwell time	See characteristic dwell time from the ignition coil used
Internal transistor	Triple Darlington

### Connectors and Wires

Three pin connector	Bosch Jetronic three pin
Mating connector	D 261 205 289-01
Pin 1	Collector transistor 1
Pin 2	Collector transistor 2
Pin 3	Collector transistor 3
Four pin connector	Bosch Jetronic four pin
Mating connector	B 261 205 351-01
Pin 1	Basis transistor 3
Pin 2	Gnd
Pin 3	Basis transistor 2
Pin 4	Basis transistor 1

### Installation Notes

This ignition module can be used with: Coils 2x1, 2x2, 3x2, P35 and PS or comparable coils.

Please ensure that the connectors are safe from water.

The IM has to be mounted onto a cooling body. The mounting surface needs a planarity of 0.2 mm.

A heat conductive paste has to be used.

This ignition module is designed for use with engine control units which have no integrated ignition transistor.

Please observe the specified limit values.

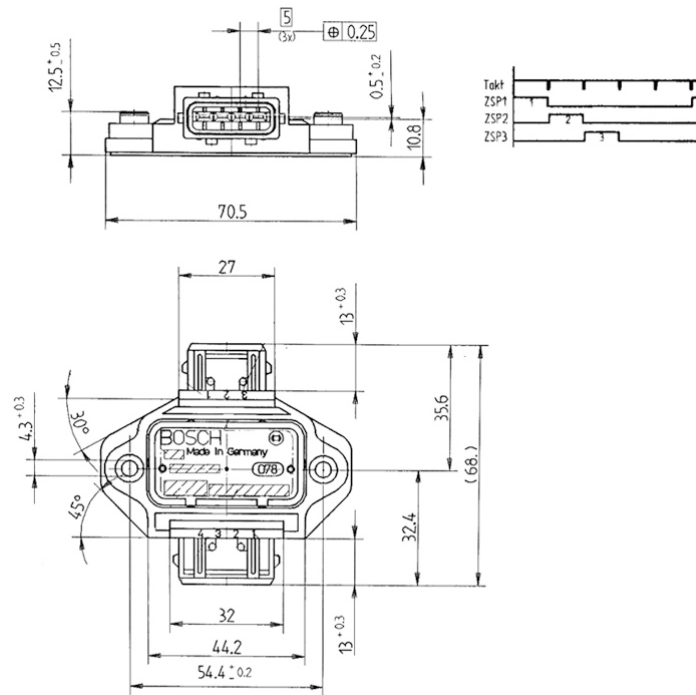
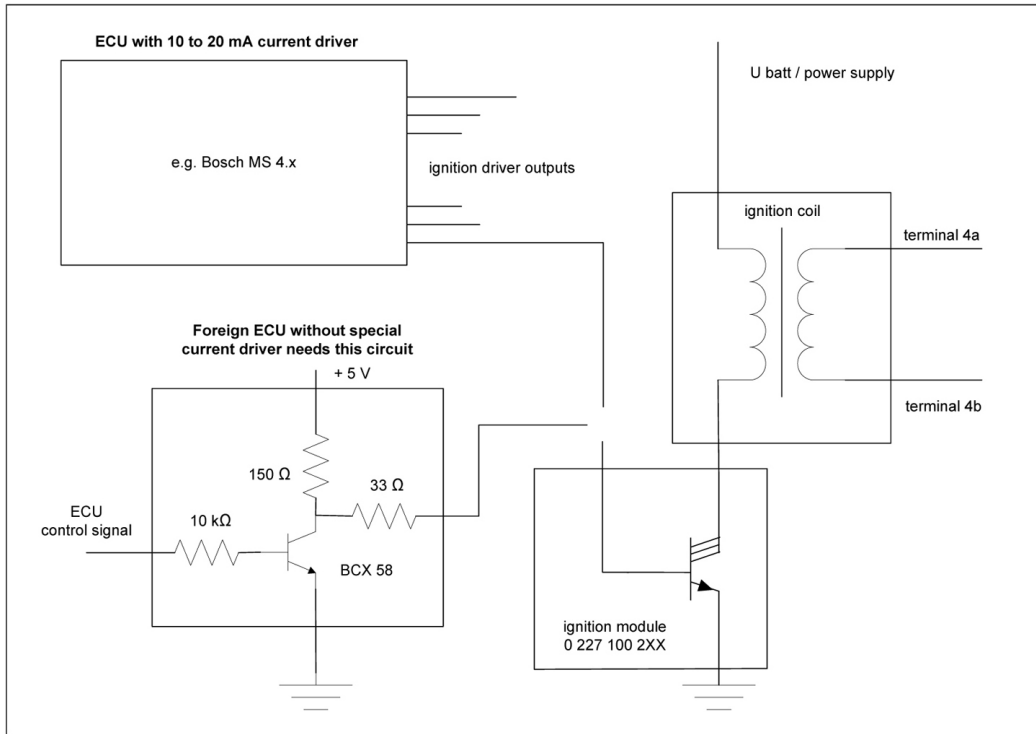
Please find further application hints in the offer drawing at our homepage.

### Ordering Information

#### Ignition Module IM 3.1

Order number **0 227 100 209**

Dimensions



**Represented by:**

**Europe:**

Bosch Engineering GmbH  
Motorsport  
Robert-Bosch-Allee 1  
74232 Abstatt  
Germany  
Tel.: +49 7062 911 79101  
Fax: +49 7062 911 79104  
motorsport@bosch.com  
www.bosch-motorsport.de

**North and South America:**

Bosch Engineering North America  
Motorsports  
38000 Hills Tech Drive  
Farmington Hills, MI 48331-3417  
United States of America  
Tel.: +1 248 876 2977  
Fax: +1 248 876 7373  
motorsport@bosch.com  
www.bosch-motorsport.com

**Asia-Pacific:**

Bosch Engineering Japan K.K.  
Motorsport Department  
18F Queen's Tower C, 2-3-5 Minato Mirai Nishi-ku, Yokohama-shi  
Kanagawa 220-6218  
Japan  
Tel.: +81 45 650 5610  
Fax: +81 45 650 5611  
motorsport@bosch.com  
www.bosch-motorsport.com